

FX4 FLUID PUMP ASSEMBLIES

Models: FX4PL (PTFE/Leather), FX4PP (PTFE),
FX4PU (PTFE/UHMW), FX4UC (U-Cups)



SPECIFICATIONS	
Maximum fluid pressure:	96 bar [1390 psi]
Displacement per cycle:	24 cc [0.8 oz]
Output @ 60 cycles/min:	1.4 L/m [0.4 gal/m]
Fluid inlet size:	3/4" NPS(m)
Fluid outlet size:	3/8" NPSM(m)
Weight:	4.2 kg [9.2 lbs]
Wetted parts materials of construction:	Stainless Steel, Tungsten Carbide, Ceramic Coated Stainless Steel, PTFE, Polyethylene, Leather

In this part sheet, the words **WARNING**, **CAUTION** and **NOTE** are used to emphasize important safety information as follows:

WARNING

Hazards or unsafe practices which could result in severe personal injury, death or substantial property damage.

CAUTION

Hazards or unsafe practices which could result in minor personal injury, product or property damage.

NOTE

Important installation, operation or maintenance information.

WARNING

Read the following warnings before using this equipment.



READ THE MANUAL

Before operating finishing equipment, read and understand all safety, operation and maintenance information provided in the operation manual.



WEAR SAFETY GLASSES

Failure to wear safety glasses with side shields could result in serious eye injury or blindness.



DE-ENERGIZE, DEPRESSURIZE, DISCONNECT AND LOCK OUT ALL POWER SOURCES DURING MAINTENANCE

Failure to De-energize, disconnect and lock out all power supplies before performing equipment maintenance could cause serious injury or death.



OPERATOR TRAINING

All personnel must be trained before operating finishing equipment.



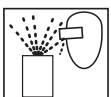
EQUIPMENT MISUSE HAZARD

Equipment misuse can cause the equipment to rupture, malfunction, or start unexpectedly and result in serious injury.



KEEP EQUIPMENT GUARDS IN PLACE

Do not operate the equipment if the safety devices have been removed.



PROJECTILE HAZARD

You may be injured by venting liquids or gases that are released under pressure, or flying debris.



PINCH POINT HAZARD

Moving parts can crush and cut. Pinch points are basically any areas where there are moving parts.



PACEMAKER WARNING

You are in the presence of magnetic fields which may interfere with the operation of certain pacemakers.



AUTOMATIC EQUIPMENT

Automatic equipment may start suddenly without warning.



INSPECT THE EQUIPMENT DAILY

Inspect the equipment for worn or broken parts on a daily basis. Do not operate the equipment if you are uncertain about its condition.



NEVER MODIFY THE EQUIPMENT

Do not modify the equipment unless the manufacturer provides written approval.



KNOW WHERE AND HOW TO SHUT OFF THE EQUIPMENT IN CASE OF AN EMERGENCY



PRESSURE RELIEF PROCEDURE

Always follow the pressure relief procedure in the equipment instruction manual.



NOISE HAZARD

You may be injured by loud noise. Hearing protection may be required when using this equipment.



HIGH PRESSURE CONSIDERATION

High pressure can cause serious injury. Relieve all pressure before servicing. Spray from the spray gun, hose leaks, or ruptured components can inject fluid into your body and cause extremely serious injury.



STATIC CHARGE

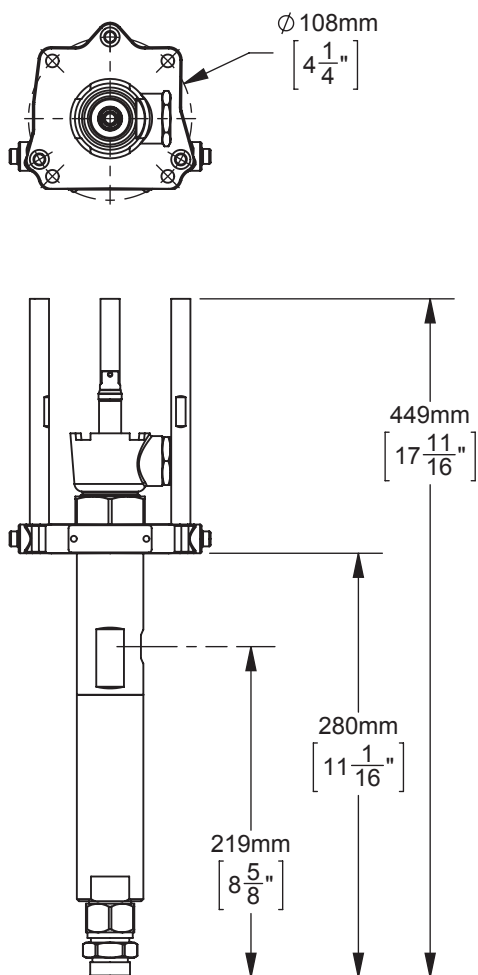
Fluid may develop a static charge that must be dissipated through proper grounding of the equipment, objects to be sprayed and all other electrically conductive objects in the dispensing area. Improper grounding or sparks can cause a hazardous condition and result in fire, explosion or electric shock and other serious injury.



PROP 65 WARNING

WARNING: This product contains chemicals known to the State of California to cause cancer and birth defects or other reproductive harm.

IT IS THE RESPONSIBILITY OF THE EMPLOYER TO PROVIDE THIS INFORMATION TO THE OPERATOR OF THE EQUIPMENT. FOR FURTHER SAFETY INFORMATION REGARDING THIS EQUIPMENT, SEE THE GENERAL EQUIPMENT SAFETY BOOKLET (77-5300).

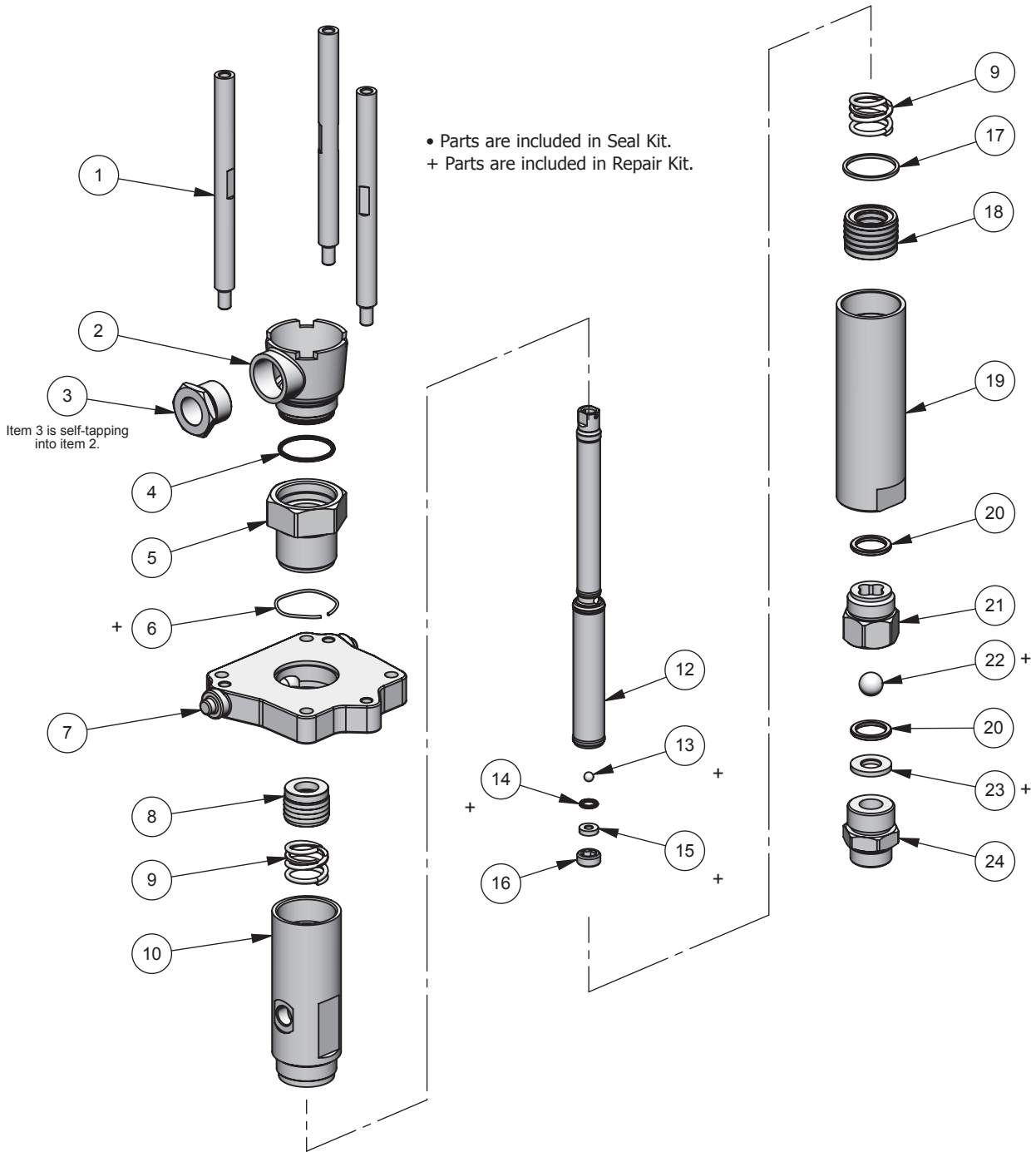


FX4 FLUID PUMP ASSEMBLIES – TROUBLESHOOTING

PROBLEM	CAUSE	SOLUTION
Material in solvent cup	Worn or dirty upper packings.	Replace or clean upper packings as necessary.
Pump does not stop on the down stroke	Worn or dirty lower ball check.	Replace or clean the parts as necessary.
Pump does not stop on the up stroke	Worn or dirty upper ball check. Worn or dirty lower packings.	Replace or clean the parts as necessary.
Pump runs erratically	Blocked material siphon kit. Blocked inlet filter or strainer. Low material level.	Replace or clean the siphon kit. Replace or clean inlet filter or strainer. Replace or refill material container.
Pump runs, with no output	Loose connection in between pump and siphon assembly. Stuck lower ball.	Check that all connections are tight. Replace or clean the parts as necessary.

FX4 FLUID PUMP ASSEMBLIES (CHEVRON PACKINGS)

Models: FX4PL (PTFE/Leather), FX4PP (PTFE), FX4PU (PTFE/UHMW)

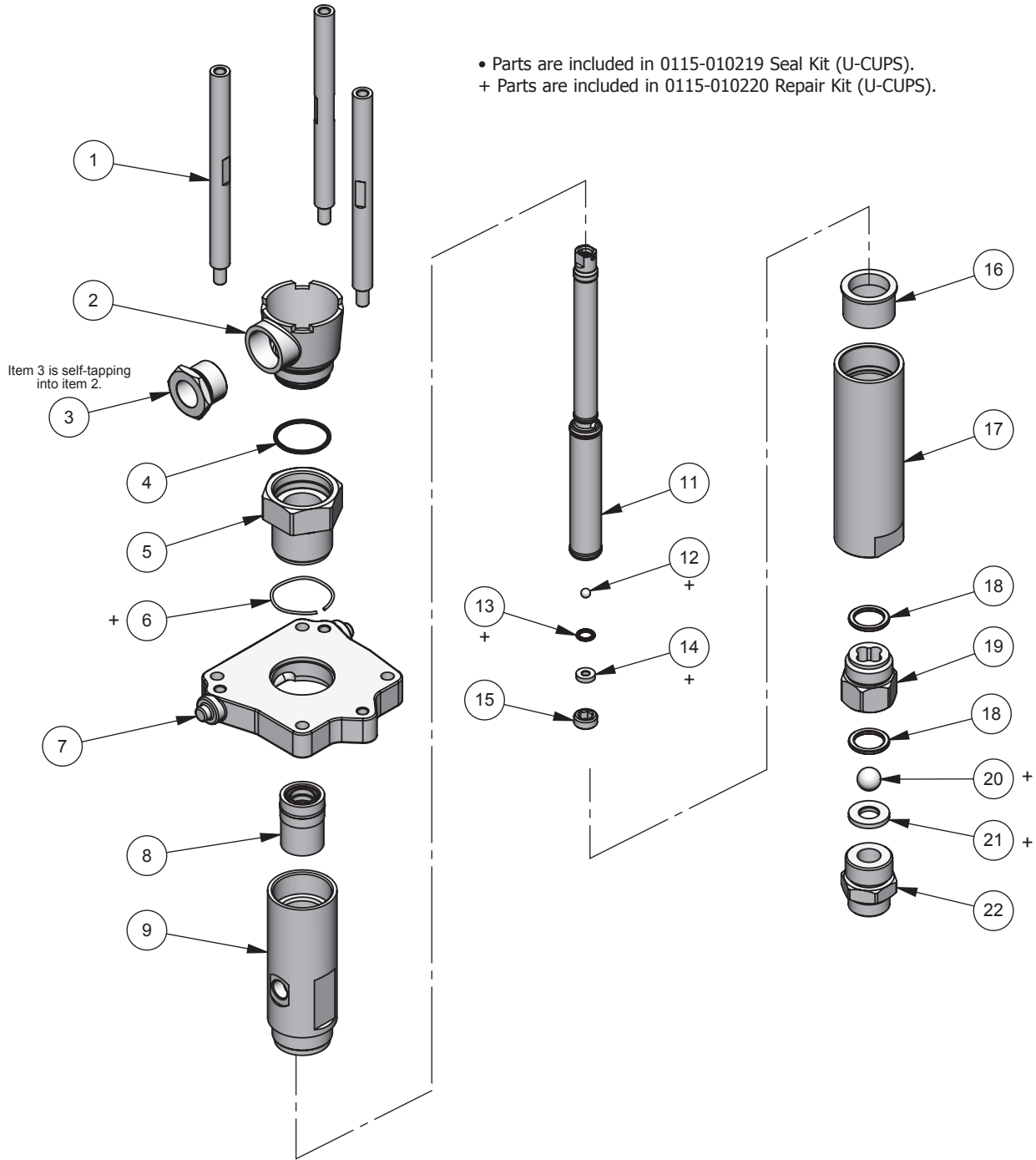


FX4 FLUID PUMP ASSEMBLIES (CHEVRON PACKINGS)
Models: FX4PL (PTFE/Leather), FX4PP (PTFE), FX4PU (PTFE/UHMW)

ITEM NO.	PART NUMBER	DESCRIPTION	FX4PL QTY.	FX4PP QTY.	FX4PU QTY.
1	0115-010646	PUMP TIE ROD	3	3	3
2	0115-010059	SOLVENT CUP	1	1	1
3	0115-010060	SIGHT GAUGE	1	1	1
4	0115-010061 •+	SOLVENT CUP SEAL	1	1	1
5	0115-010062	PACKING ADAPTER	1	1	1
6	0115-010058 +	WAVE SPRING	1	1	1
7	0115-010204	ADAPTER PLATE MACHINING	1	1	1
8	0115-010171 •+	UPPER PACKING SET (PTFE/LEATHER)	1	-	-
	0115-010175 •+	UPPER PACKING SET (PTFE/UHMW)	-	-	1
	0115-010206 •+	UPPER PACKING SET (PTFE)	-	1	-
9	0115-010111	PACKING SPRING	2	2	2
10	0115-010055	UPPER PUMP TUBE	1	1	1
12	0115-010063	PUMP ROD (HARD CHROME)	1	1	1
13	0114-014745 +	UPPER BALL, 6mm	1	1	1
14	0115-010065 +	ROD SEAT SEAL	1	1	1
15	0115-010066 +	ROD SEAT	1	1	1
16	0115-010067	ROD SEAT NUT	1	1	1
17	0115-010064 •+	LOWER PUMP TUBE SEAL	1	1	1
18	0115-010173 •+	LOWER PACKING SET (PTFE/LEATHER)	1	-	-
	0115-010177 •+	LOWER PACKING SET (PTFE/UHMW)	-	-	1
	0115-010207 •+	LOWER PACKING SET (PTFE)	-	1	-
19	0115-010056	LOWER PUMP TUBE	1	1	1
20	0115-010068 •+	LOWER SEAT SEAL	2	2	2
21	0115-010057	LOWER BALL CAGE	1	1	1
22	0114-014237 +	LOWER BALL, 15mm	1	1	1
23	0115-010069 +	LOWER SEAT	1	1	1
24	0115-010149	FLUID INLET FITTING, 3/4" NPS(m)	1	1	1
25	0115-010099 +	ROD CLIP (not shown)	2	2	2
• Parts are included in Seal Kit:			0115-010221	0115-010223	0115-010225
+ Parts are included in Repair Kit:			0115-010222	0115-010224	0115-010388

FX4 FLUID PUMP ASSEMBLIES (U-CUPS)

Models: FX4UC



FX4 FLUID PUMP ASSEMBLIES (U-CUPS)

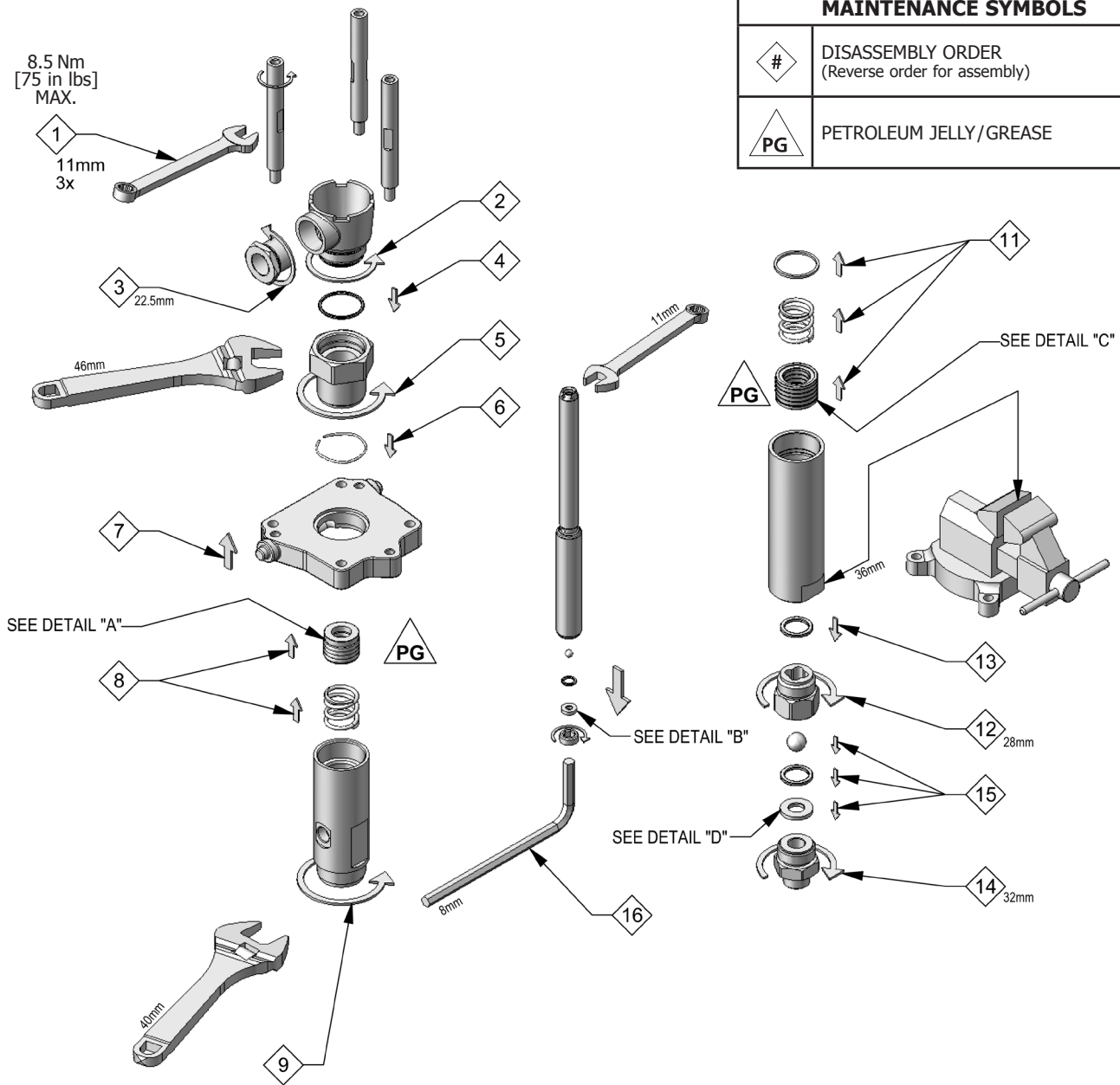
Models: FX4UC

ITEM NO.	PART NUMBER	DESCRIPTION	QTY.
1	0115-010646	PUMP TIE ROD	3
2	0115-010059	SOLVENT CUP	1
3	0115-010060	SIGHT GAUGE	1
4	0115-010061 •+	SOLVENT CUP SEAL	1
5	0115-010062	PACKING ADAPTER	1
6	0115-010058 +	WAVE SPRING	1
7	0115-010204	ADAPTER PLATE MACHINING	1
8	0115-010166 •+	UPPER SEAL CARTRIDGE ASSEMBLY	1
9	0115-010055	UPPER PUMP TUBE	1
11	0115-010063	PUMP ROD (HARD CHROME)	1
12	0114-014745 +	UPPER BALL, 6mm	1
13	0115-010065 +	ROD SEAT SEAL	1
14	0115-010066 +	ROD SEAT	1
15	0115-010067	ROD SEAT NUT	1
16	0115-010169 •+	LOWER SEAL CARTRIDGE ASSEMBLY	1
17	0115-010056	LOWER PUMP TUBE	1
18	0115-010068 •+	LOWER SEAT SEAL	2
19	0115-010057	LOWER BALL CAGE	1
20	0114-014237 +	LOWER BALL, 15mm	1
21	0115-010069 +	LOWER SEAT	1
22	0115-010149	FLUID INLET FITTING, 3/4" NPS(m)	1
23	0115-010099 +	ROD CLIP (not shown)	2

- Parts are included in 0115-010219 Seal Kit (U-CUPS).
- + Parts are included in 0115-010220 Repair Kit (U-CUPS).

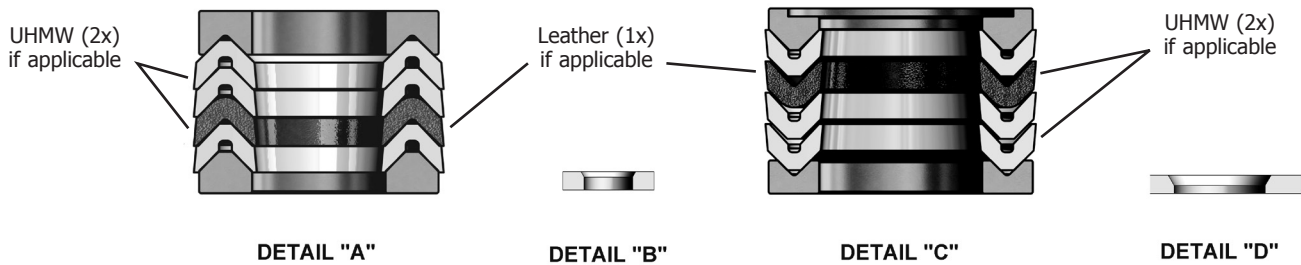
FX4 FLUID PUMP (CHEVRONS) – MAINTENANCE

Models: FX4PL (PTFE/Leather), FX4PP (PTFE), FX4PU (PTFE/UHMW)



MAINTENANCE SYMBOLS	
#	DISASSEMBLY ORDER (Reverse order for assembly)
PG	PETROLEUM JELLY/GREASE

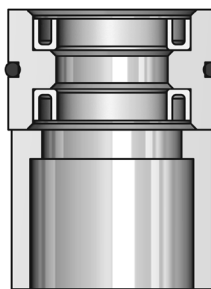
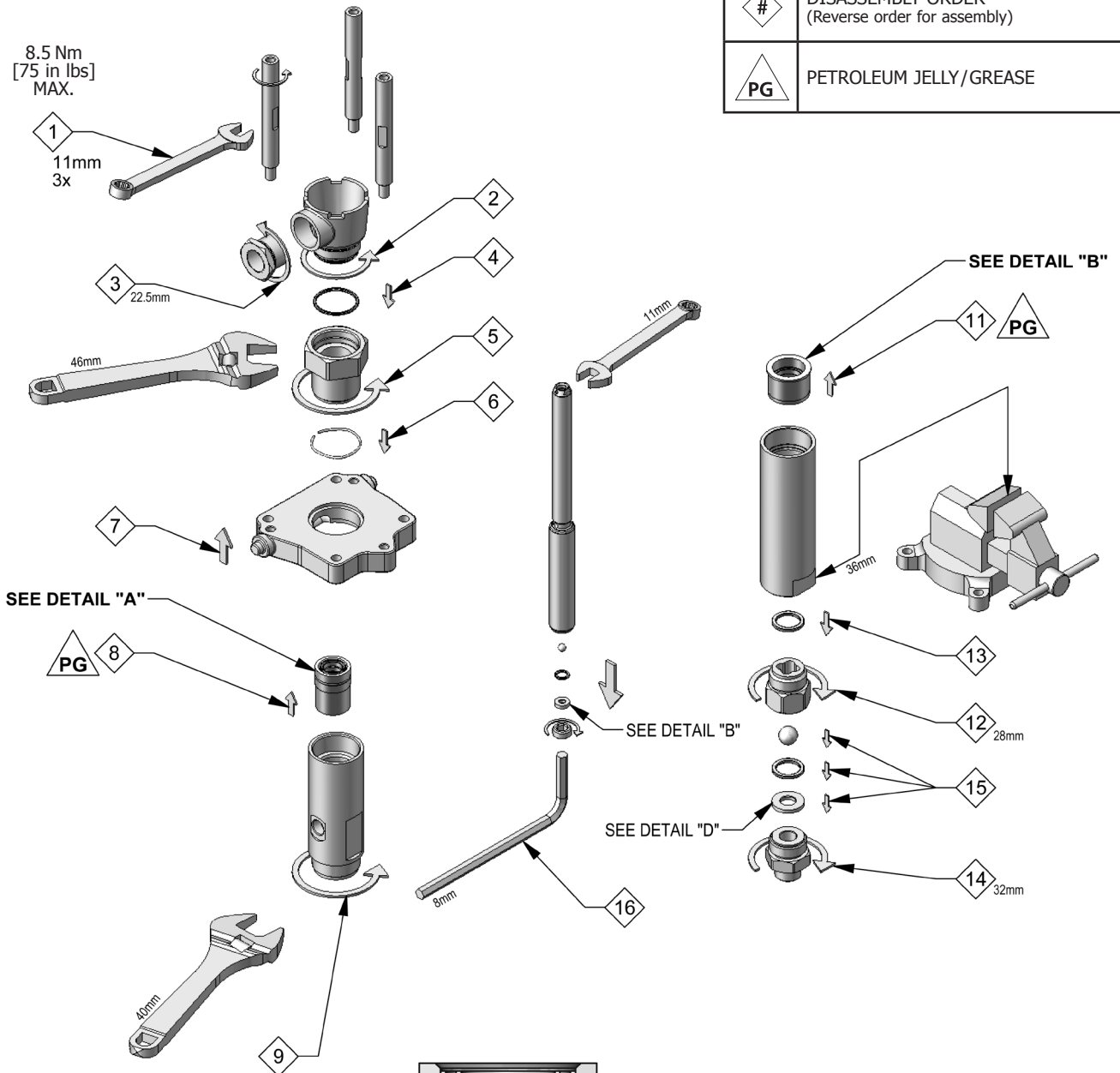
FX4 PACKING AND SEAT ORIENTATION



FX4 FLUID PUMP (U-CUPS) – MAINTENANCE

Models: FX4UC

MAINTENANCE SYMBOLS	
#	DISASSEMBLY ORDER (Reverse order for assembly)
PG	PETROLEUM JELLY/GREASE



DETAIL "A"



DETAIL "B"

WARRANTY POLICY

Binks products are covered by Carlisle Fluid Technologies one year materials and workmanship limited warranty. The use of any parts or accessories, from a source other than Carlisle Fluid Technologies, will void all warranties. For specific warranty information please contact the closest Carlisle Fluid Technologies location listed below.

Carlisle Fluid Technologies reserves the right to modify equipment specifications without prior notice. DeVilbiss®, Ransburg®, ms®, BGK®, and Binks® are registered trademarks of Carlisle Fluid Technologies, Inc.

©2018 Carlisle Fluid Technologies, Inc.
All rights reserved.

Binks is part of Carlisle Fluid Technologies, a global leader in innovative finishing technologies. For technical assistance or to locate an authorized distributor, contact one of our international sales and customer support locations.

USA/Canada

info@carlisleleft.com
Tel: 1-888-992-4657
Fax: 1-888-246-5732

China

mkt@carlisleleft.com.cn
Tel: +8621-3373 0108
Fax: +8621-3373 0308

Germany

info@carlisleleft.eu
Tel: +49 (0) 6074 403 1
Fax: +49 (0) 6074 403 281

United Kingdom

info@carlisleleft.eu
Tel: +44 (0)1202 571 111
Fax: +44 (0)1202 573 488

Mexico

ventas@carlisleleft.com.mx
Tel: +52 55 5321 2300
Fax: +52 55 5310 4790

Australia

sales@carlisleleft.com.au
Tel: +61 (0) 2 8525 7555
Fax: +61 (0) 2 8525 7575

Japan

overseas-sales@carlisleleft.co.jp
Tel: +81 45 785 6421
Fax: +81 45 785 6517

For the latest information about our products, visit www.carlisleleft.com.