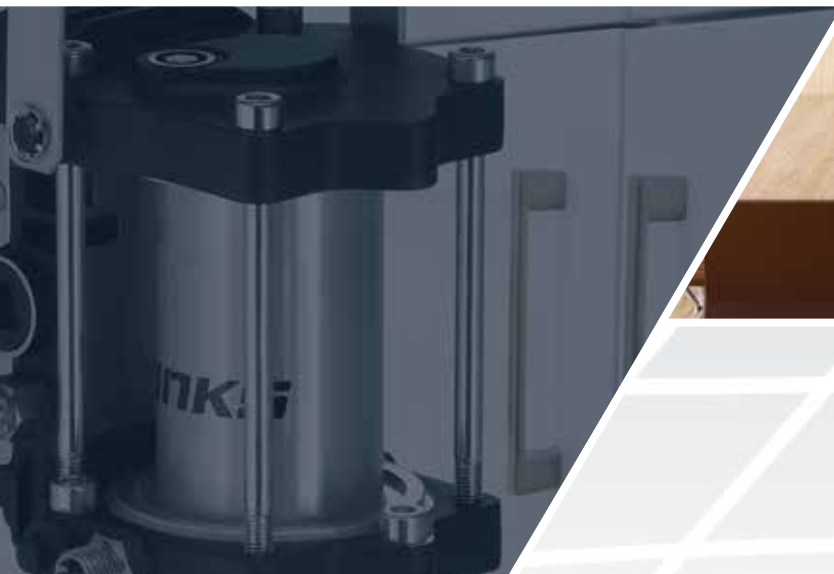


BINKS MX SERIES

Air Assist Airless Piston Pumps

FLUID HANDLING



Ideal for air assist airless spray finishing,
supporting 1 to 2 spray guns,
with thin to medium viscosity coatings.



BINKS MX Series

Air Assist Airless Piston Pumps

Binks MX Pumps are a completely new design in air operated pump technology utilizing a patented magnetic detents to provide fast changover with virtually no pulsation. The result is paint, delivery with less pulsation for a more consistent finish.

The MX Medium pressure pumps are available in the ratios of 12:1 and 32:1 with outputs of 0.4 GPM or 1.2 GPM. The MX piston are ceramic coated which is the most durable surface available for resisting wear from abrasive materials.



COATING TYPES AND APPLICATIONS

- Wood-Stains, Lacquers & Varnishes
- Primers and Sealers
- Solvent and Waterborne coatings
- Enamels and Polyurethanes



WOODWORKING



AEROSPACE



AGRICULTURAL AND OFF ROAD




MARINE INDUSTRY



TRUCK AND BUS

BINKS MX SERIES FEATURES

COMPARISON TO MAJOR PUMP MANUFACTURER	STANDARD	COMPETITION*
Long Lasting Ceramic Coated Piston Rods Resists wear from highly abrasive fluids and lasts up to 3X longer than hard chrome	X	NO
Low/No Ice Operate 2.5X longer than the competition	X	NO
Patented Air Valve Technology Enables pump to change over quickly without pulsing	X	NO
Lubricant Free Air Motor and Valve Design Reduces Maintenance and simplifies operation	X	NO
5 Year Limited Warranty 	X	NO

* Comparison to major airless pump manufacturer

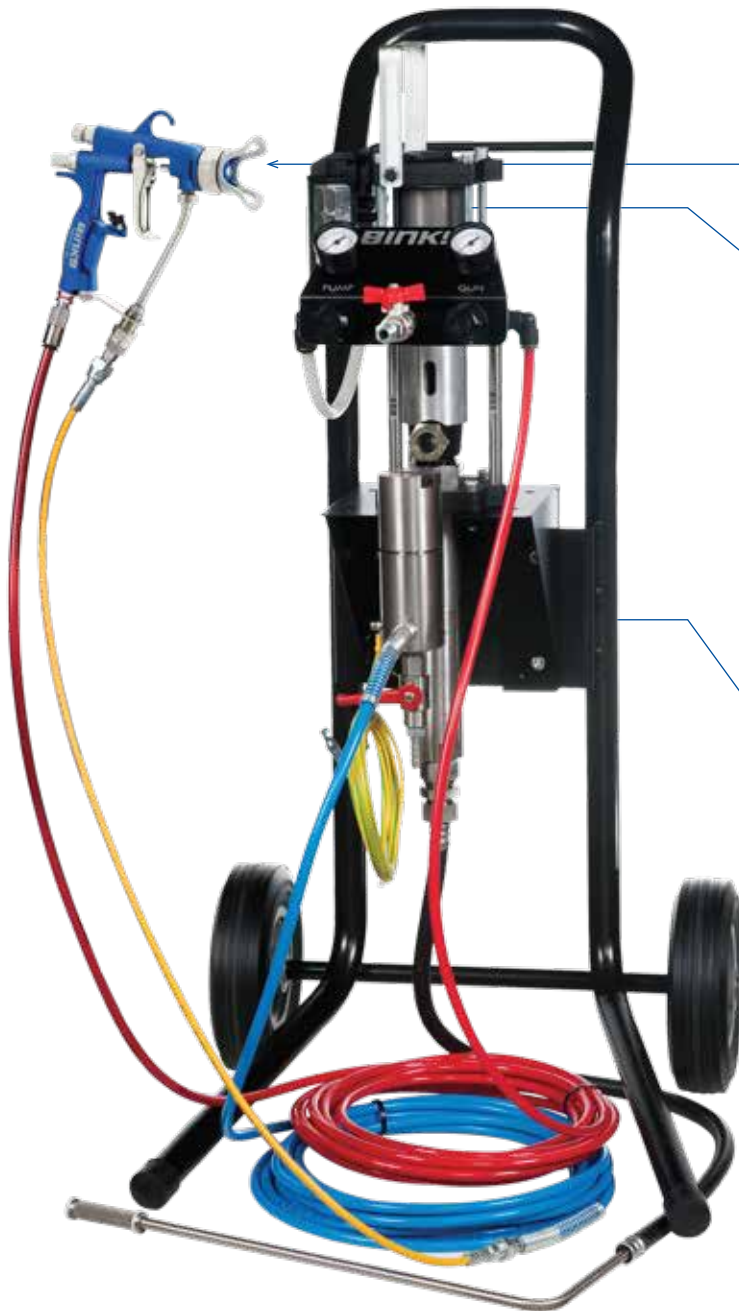


MX pumps are designed to operate at longer intervals in between repairs and reduce the overall cost of ownership

BINKS MX Series

Air Assist Airless Piston Pumps

Shown: Binks MX 1231 cart-mount outfit with Trophy AA 1600 gun, 5-gallon siphon, filter, 25" hose



Trophy AA 1600 Air Assist Airless gun

Patented Anti-Stall Magnetic Detent Technology with quick exhaust valves for uninterrupted products

Stainless Steel Housing with Ceramic Coated Piston Rod reduces wear to increase pump life

BINKS MX SERIES FEATURES

PUMP	MX412	MX432	MX1212	MX1231
Ratio	12:1	32:1	12:1	31:1
Max Inlet Pressure	116 psi (8 bar)	116 psi (8 bar)	116 psi (8 bar)	116 psi (8 bar)
Flow Rate at 60 cycles	0.4 gpm	0.4 gpm	1.2 gpm	1.2 gpm
Volume cycle	0.8 oz (24cc)	0.8 oz (24cc)	2.4 oz (71cc)	2.4 oz (71cc)
Max Fluid Pressure	1,390 psi	3,712 psi	1,390 psi	3,596 psi
Air Consumption at 20 cycles/min	2.2 SCFM	5.2 SCFM	5.2 SCFM	17.6 SCFM

PUMP ACCESSORIES AND SPARE PARTS

	MX412	MX432	MX1212	MX1231
Flat Tip gun	1600-HF1310	4400-HF0000	1600-HF1310	4400-HF0000
Twist Tip Gun	1600-HT0613	4400-HT0000	1600-HT0613	4400-HT0000
5 Gallon Siphon	41-17260	41-17260	41-17262	41-17262
55 gallon Siphon	0115-010381	0115-010381	0115-010381	0115-010381
Filter 100 mesh	0115-010326	0115-010326	0115-010326	0115-010326
Filter 200 mesh	0115-010630	0115-010630	0115-010630	0115-010630

Air Motor Spares

Repair Kit	0115-010214	0115-010215	0115-010215	0115-010301
Seal Kit	0115-010216	0115-010217	0115-010217	0115-010302
Valve Kit	0115-010226	0115-010226	0115-010226	0115-010226
Hardware kit	0115-010213	0115-010213	0115-010213	0115-010300

MX Lite Part Numbers

MX412UC-OLT000	MX412UC pump with air control tripod mount
MX412UC-QLT0S25	MX412UC pump with Trophy AA 1600 gun, air control, tripod mount, 5-gal siphon, 25' hose
MX412UC-OLW0000	MX412UC pump with air control wall mount
MX412UC-QLW0S25	MX412UC pump with Trophy AA 1600 gun, air control, wall mount, 5-gal siphon, 25' hose
MX412UC-QLC0S25	MX412UC pump with Trophy AA 1600 gun, air control, cart mount, 5-gal siphon, 25' hose

MX SERIES ORDERING INFORMATION

MX1231 Pump with 1.2 gpm fluid section, 31:1 ratio, U-Cup packing, AA4400M flat tip, Dual Air Control, Cart Mount, Stainless Steel filter, 5 gallon siphon, and 25" hose

A / **B** / **C** / **D** / **E** / **F** / **G** / **H** / **I**
MX 12 31 UC -T D C 1 5 25

A / OUTPUT

4 = 0.4 gpm
12 = 1.2 gpm

B / RATIO

12 = 12:1
31 = 31:1
32 = 32:1

C / PACKINGS

PP = PTFE Packings
PU = PTFE/UHMWPE
UC = UHMWPE
 U-Cup Seals

D / GUN

O = None
P = Airless 75/Flat Tip
Q = Trophy AA 1600M/Flat Tip
R = Trophy AA 1600M/Twist Tip
T = Trophy AA 4400M/Flat Tip
U = Trophy AA 4400M/Twist Tip

E / AIR CONTROL

E = Dual Air Control

F / MOUNTING

O = None
C = Cart
T = Tripod
W = Wall

G / FILTER

O = None
1 = Stainless Steel Filter

H / SIPHON

O = None
5 = 5 gallon Siphon
55 = 55 gallon Siphon

I / HOSE

00 = None
25 = 25' Hose
50 = 50' Hose



BINKS MX SERIES 5-YEAR WARRANTY

Binks warrants to the original end-use purchaser that the Binks branded products "MX" shall not fail under normal use and service due to a defect in material or workmanship within five (5) years from the date of shipment from Binks. Does not include normal wear and tear parts.

For further technical information please refer to the Binks MX manual.



SOLUTIONS FOR YOUR WORLD

www.carlisleft.com

World Class Manufacturers of: | Process Controls | Curing & Conveying
 Electrostatics | Fluid Handling | Powder Coating | Atomization

Carlisle Fluid Technologies US
 16430 N. Scottsdale Road, Suite 450
 Scottsdale, AZ 85254

Tel: 1-800-992-4657
 Fax: 877-790-6965
 Email: ghcustserv@carlisleft.com