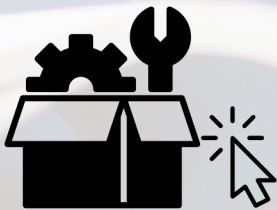


CET

Coating Equipment Technology, Inc
Quality Spray Equipment. World Class Service.

C.A. Technologies

CA Tech Lynx L100CM Spray Gun



CLICK-N-PICK SPARE PARTS CUTSHEET

Easily find spare parts without digging through the full manual.

[Click on part numbers to order.](#)

BINKS

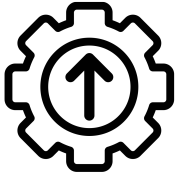


C.A. Technologies

DEVILBISS

SCHULZ

ENHANCED "INTERACTIVE" MANUAL



BLUE TEXT = CLICK TO ORDER 



DISTRIBUTED BY COATING EQUIPMENT TECHNOLOGY, INC

PHONE: 586-210-0555

WEB: www.cetinc.com

CONVENTIONAL AIR CAP AND FLUID NOZZLE CHART

MODEL NO.	AIR CAPS	Press / Siphon	*SUGGESTED GUN INLET PRESS.	FAN CONTROL	SCFM	AIR CAP RING	AVAILABLE FLUID NOZZLES	NEEDLES / marking on needle
L100CM	21-223	Pressure	50	60-122 (Plug)	3	21-204	31-0618 1.8mm (.070")	40-1115 (115)
	21-224				6		31-0622 2.2mm (.086")	40-1122 (122)
	21-228				10		31-0628 2.8mm (.110")	40-1128 (128)

*Gun inlet pressures may vary as required by application

**All air caps require P/N 21-1583 base & air cap ring

Operation and Maintenance Instructions for *L100CM* Spray Guns

General

The L100CM is a “bleeder type”(atomizing air flows continuously) spray gun with pressurized material supply cup and an internal mix style spray nozzle. It has been optimized for the application of multi-color coatings but also is excellent for single color latex or oil based interior paints.

Operation

1. Connect air supply hose at handle of gun.
2. Connect a pressurized fluid supply or paint siphon cup to the gun fluid inlet.
3. Fluid flow can be controlled using the fluid control knob, this restricts flow by limiting needle travel. It is best to control fluid flow by proper selection of fluid orifice size and use the fluid control knob to “fine tune flow rate”.
4. Fan width can be adjusted using the fan control knob. Turning the knob clockwise narrows the fan.

Maintenance

IMPORTANT! Routine cleaning and maintenance is essential to insure proper gun operation.

Several states prohibit spraying solvent into the atmosphere and require the use of covered gun cleaner.

1. If a gun cleaner is being used, connect and clean the gun in the gun cleaner according to the manufactures instructions.
2. If a gun cleaner is not being used:
Remove air cap and clean separately using clean solvent.
For pressure setups, connect a pressurized solvent supply to the fluid inlet, trigger the gun allowing solvent to flow thru the gun until clean.
For siphon setups, first clean the siphon cup thoroughly then spray clean solvent thru the gun until clean.

NOTE: Gun head disassembly is not recommended for normal cleaning and maintenance.

Gun head disassembly and reassembly instructions:

Have repair kit # 10-106 available before gun disassembly.

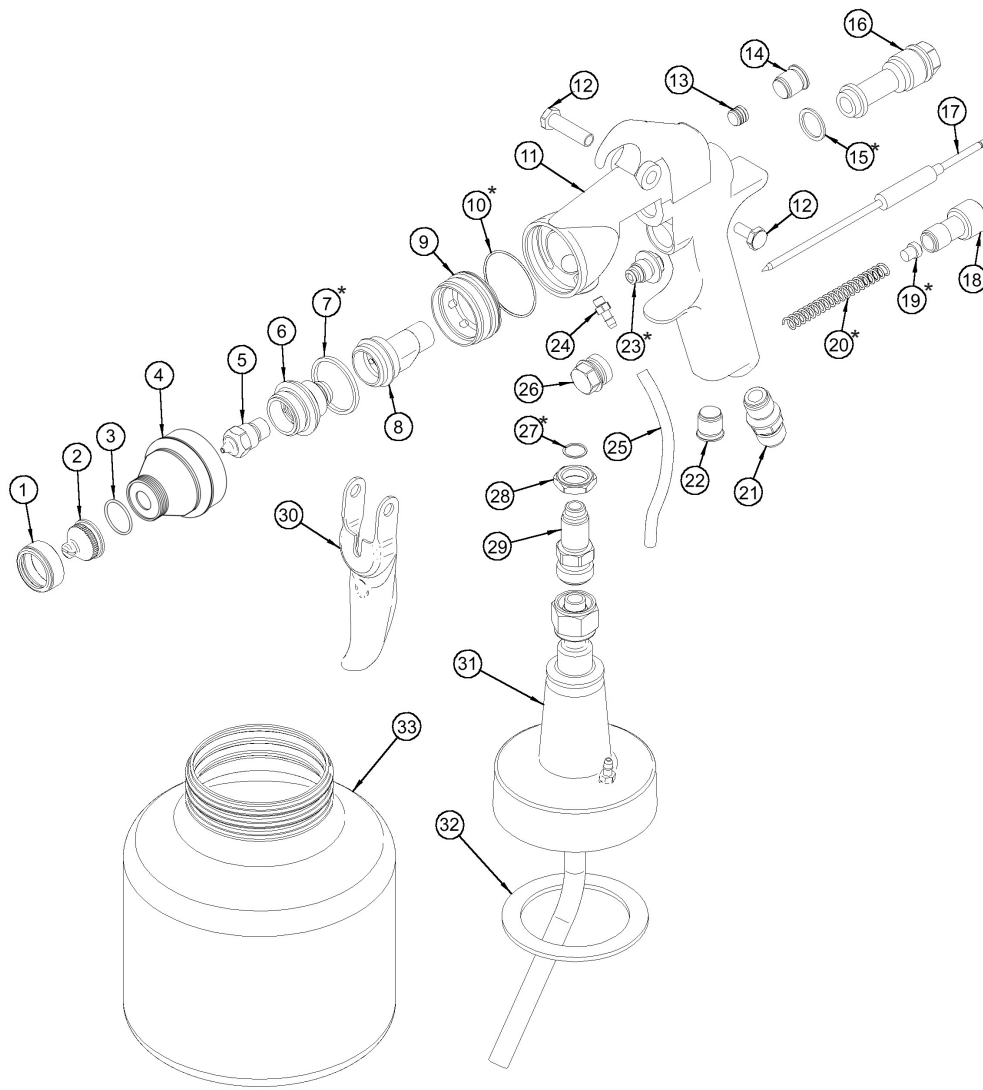
Gun head disassembly

To remove the nozzle carrier (8) and air cap adapter (9):

1. Remove the air cap (1-4), fluid nozzle tip (5), fluid nozzle body (6), and needle (17).
2. Remove the needle seal cartridge (23).
3. Loosen the locknut (28) and remove fluid inlet (29) using a 5/8” open-end wrench.
4. The nozzle carrier (8) and air cap adapter (9) will now slide forward from the gun body (11).

Gun head reassembly

1. Install a new o-ring (10) on the air cap adapter (9).
2. Install gasket (7) into the air cap adapter (9).
3. Install the thread locknut (28) onto the fluid inlet (29) as far as possible.
4. Install a new fluid inlet seal (27) into the recess area on the nozzle carrier (8) inlet port.
5. Slide the nozzle carrier (8) into air cap adapter (9) and insert into the gun body (11) as far as possible. Be sure the nozzle carrier (8) extends into the hole at the back of the gun head. Install the needle seal (23) but do not tighten.
6. Rotate the nozzle carrier (8) until the fluid inlet port in the nozzle carrier (8) is aligned with the threaded hole in the body. While in this position, insert the fluid inlet (29) and tighten firmly.
7. Tighten the needle seal (23) to approx. 12 ft.-lb. torque.
8. Tighten the fluid inlet (29) to approx. 25 ft.-lb. torque.
9. Tighten the locknut (28) to approx. 33 ft.-lb. torque.



ITEM NO.	PART NO.	DESCRIPTION	ITEM NO.	PART NO.	DESCRIPTION
1	See Air Cap Chart	Air Cap Retaining Ring	18	60-202	Fluid Control Knob
2	See Air Cap Chart	Air Cap	19	60-205	Spring Seat*
3	98-8014	O-Ring	20	60-204	Spring*
4	21-1583	Base Assembly	21	60-104	Air Inlet Fitting
5	See Air Cap Chart	Fluid Nozzle	22	60-122	Plug
6	31-2201	Fluid Nozzle Body	23	60-1400	Needle Seal Cartridge*
7	61-1005	Seal Ring*	24	60-502	Barb Fitting
8	60-L11C	Nozzle Body Carrier	25	53-20-4.3	1/8" Nylon Tube
9	60-12C	Air Cap Adapter	26	60-309	Plug
10	60-131	O-Ring*	27	60-124	Seal*
11	60-1124	Lynx Gun Body Conventional	28	60-128	Lock Nut
12	61-1033	Trigger Pivot Set	29	60-126	Fluid Inlet
13	98-0109	Allen Plug	30	60-2101	Trigger
14	60-122	Plug	31	51-353	Cup Cover Assembly
15	60-119	Seal Ring*	32	51-358	Cup Gasket
16	60-201	Rear Bushing	33	51-350	Cup (750 mL)
17	See Air Cap Chart	Fluid Needle	Repair Kit	10-106	Lynx Repair Kit

*Indicates part included in repair kit # 10-106

