

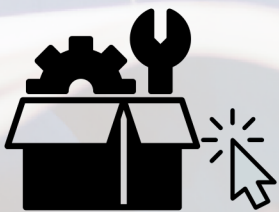
CET

Coating Equipment Technology, Inc
Quality Spray Equipment. World Class Service.

C.A. Technologies

CA Tech 10 Gallon Pressure Tanks

Bottom Outlet - Non-agitated



CLICK-N-PICK SPARE PARTS CUTSHEET

Easily find spare parts without digging through the full manual.

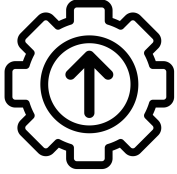
[Click on part numbers to order.](#)

C.A. Technologies



WAGNER

ENHANCED *INTERACTIVE* MANUAL



BLUE TEXT = CLICK TO ORDER 



- 51-560** NON REGULATED
- 51-561** SINGLE REGULATED
- 51-562** DOUBLE REGULATED

IMPORTANT NOTE: IF THIS PRESSURE TANK IS TO BE USED FOR SPRAYING FLAMMABLE MATERIALS, OPERATOR MUST NOT PRESSURIZE THIS TANK MORE THAN 15 PSI TO MEET OSHA REQUIREMENTS. FOR NON-ASME PRESSURE VESSELS. IT IS THE RESPONSIBILITY OF THE OPERATOR TO FOLLOW THIS MANDATORY PROCEDURE.

GENERAL INFORMATION

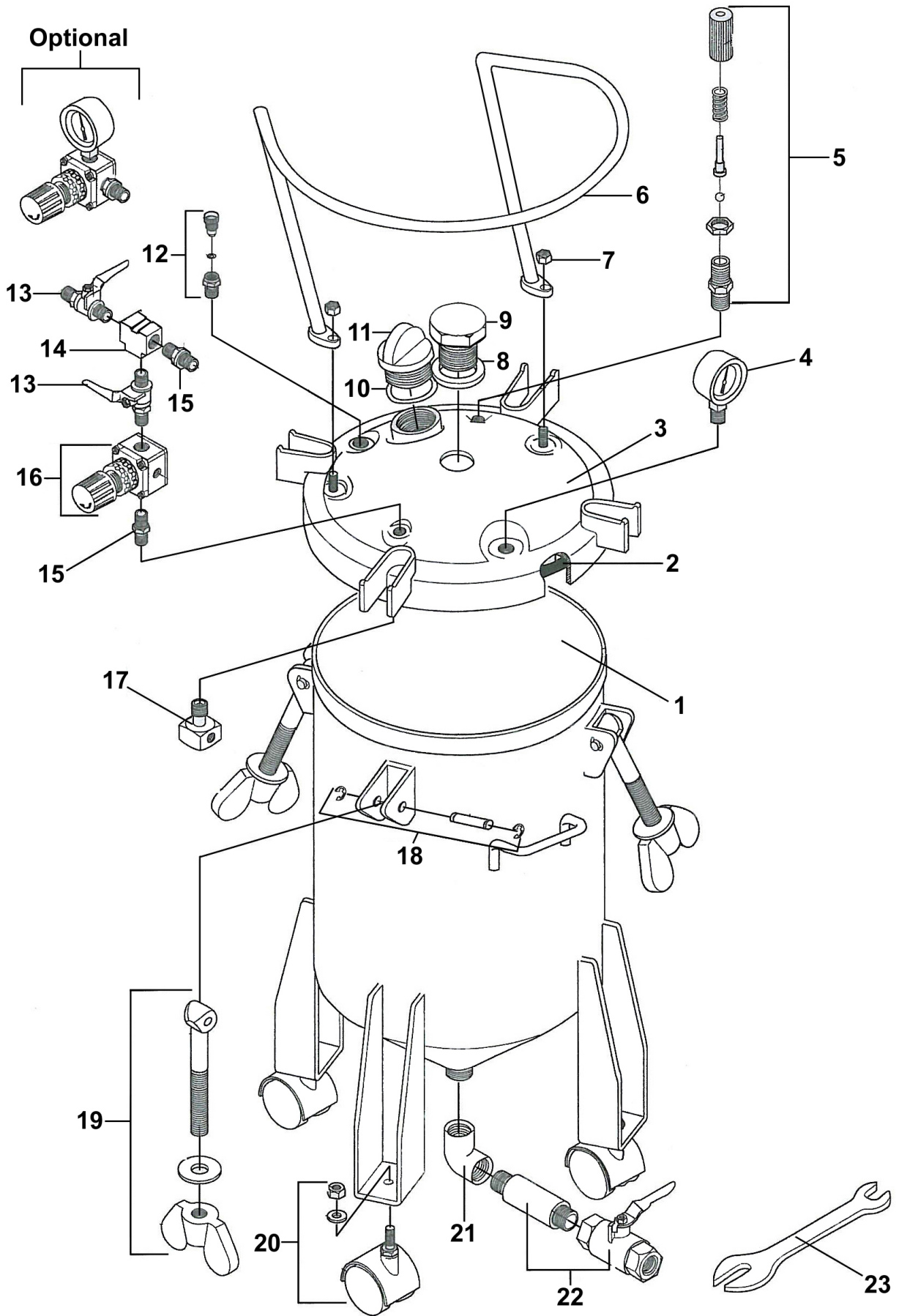
This pressure tank is equipped with either single or double air pressure regulation, pressure safety relief valve, tank vent valve, bottom outlet ball valve and four caster wheels.

CAUTION!

1. Maximum tank pressure of 80 psi. The safety relief valve is designed to protect the tank against excessive pressures. DO NOT attempt to make adjustments to this valve. If this valve begins to vent air, reduce the setting on the air inlet regulator.
2. DO NOT alter the tank in any way by welding, drilling or machining as this may weaken the structure of the tank.
3. To prevent hazardous static sparks from occurring, always ground the tank by connecting a 12 ga. wire to the tank and to a known earth ground.
4. Be sure tank pressure is completely relieved before attempting to remove tank cover or material fill cap. Shut off the main air supply to the tank and vent pressure using the vent valve located on the tank lid.

ITEM NO.	PART NO.	DESCRIPTION
1	51-579	Tank Shell
2	51-520	Gasket
3	51-577	Tank Lid Assembly
4	52-58	Pressure Gauge
5	51-229	Safety Relief Valve Assembly
6	51-535	Guard
7	98-0115	Nut 3/8-16
8	51-245	Seal Ring
9	51-533	Plug
10	51-522	Seal Ring - Filler Cap
11	51-524	Material Fill Cap
12	51-234	Tank Vent Valve
13	52-150	Air Shut Off Valves
14	51-272	3-Way Union
15	51-239	Double Male Nipple
16	52-6	Air Regulator (51-222 Optional 2nd Regulator)
17	51-237	Air Flow Diffuser
18	51-233	Pin Assembly
19	51-236	Eye Bolt Assembly
20	51-224	Caster (4 Req'd)
	51-252	Optional Stationary Feet (4 Req'd)
21	51-275	Fluid Outlet Elbow
22	51-274	Fluid Outlet Ball Valve
23	51-225	Wrench

Optional



BOTTOM OUTLET PRESSURE TANKS

Bottom Outlet Pressure Tanks Available From C.A. Technologies



2.5 Gallon	PART NO.	REGULATORS	AGITATOR
	51-210	0	None
	51-211	1	None
	51-212	2	None
	51-213	1	Air
	51-214	2	Air
	51-215	0	Air



5 Gallon	PART NO.	REGULATORS	AGITATOR
	51-510	0	None
	51-511	1	None
	51-512	2	None
	51-513	0	Air
	51-514	1	Air
	51-515	2	Air



10 Gallon	PART NO.	REGULATORS	AGITATOR
	51-560	0	None
	51-561	1	None
	51-562	2	None
	51-563	0	Air
	51-564	1	Air
	51-565	2	Air