

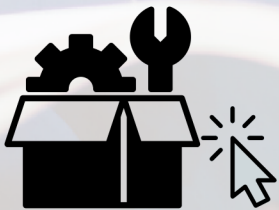
# CET

Coating Equipment Technology, Inc  
Quality Spray Equipment. World Class Service.

## C.A. Technologies

### CA Tech 12.5 Gallon Pressure Tanks

### Stainless Steel



### CLICK-N-PICK SPARE PARTS CUTSHEET

Easily find spare parts without digging through the full manual.

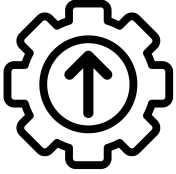
[Click on part numbers to order.](#)

C.A. Technologies



WAGNER

ENHANCED \*INTERACTIVE\* MANUAL



BLUE TEXT = CLICK TO ORDER 



**51-881** SINGLE REGULATED  
**51-882** DOUBLE REGULATED

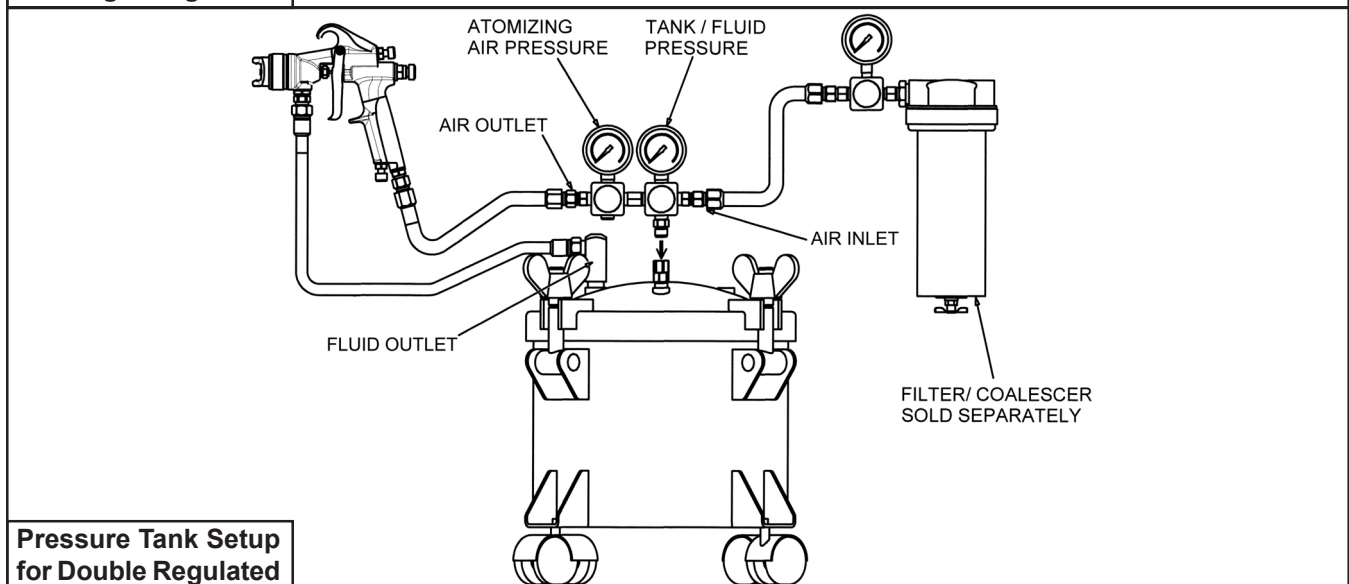
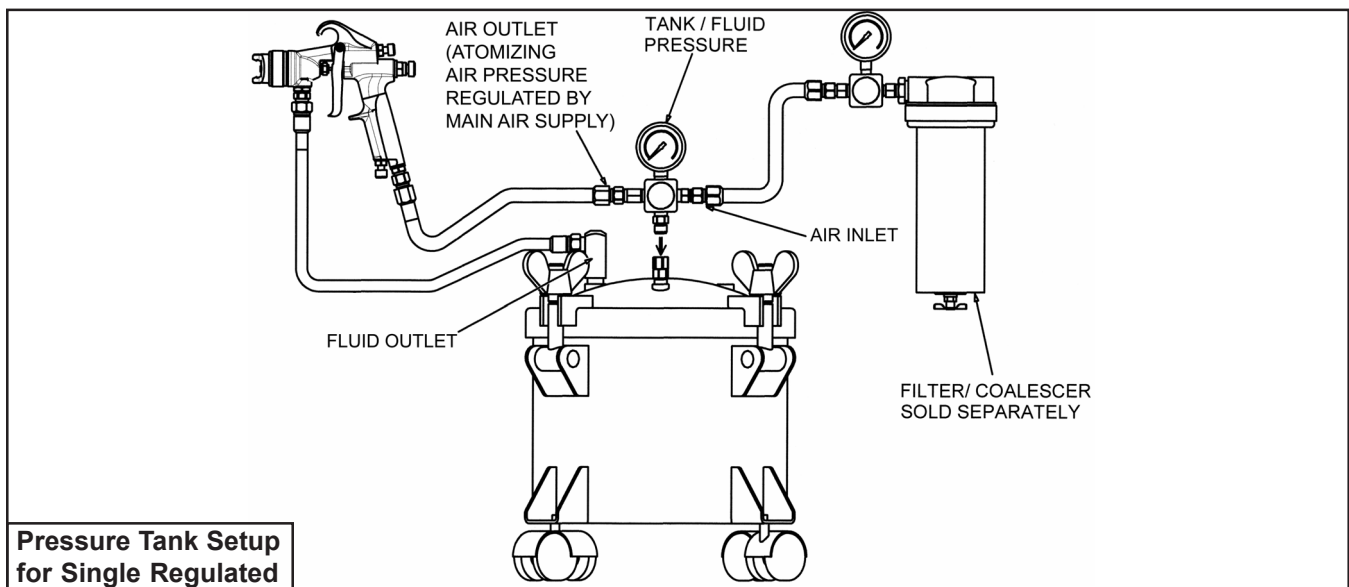
**IMPORTANT NOTE:** IF THIS PRESSURE TANK IS TO BE USED FOR SPRAYING FLAMMABLE MATERIALS, OPERATOR MUST NOT PRESSURIZE THIS TANK MORE THAN 15 PSI TO MEET OSHA REQUIREMENTS. FOR NON-ASME PRESSURE VESSELS. IT IS THE RESPONSIBILITY OF THE OPERATOR TO FOLLOW THIS MANDATORY PROCEDURE.

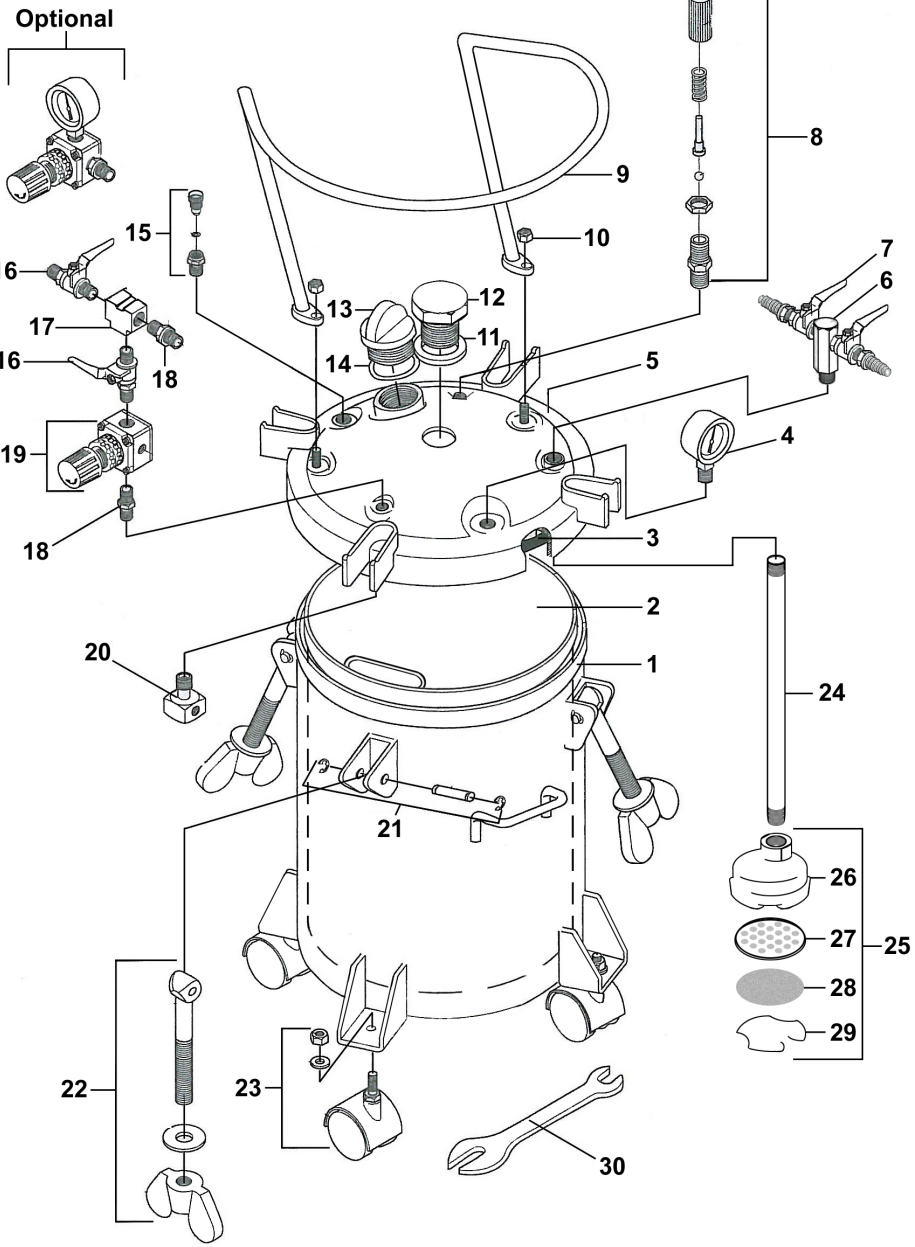
## GENERAL INFORMATION

This pressure tank is equipped with either single or double air pressure regulation, material outlet shutoff valves for 2 guns, pressure safety relief valve, disposable plastic liner, tank vent valve and four caster wheels.

## CAUTION!

1. Maximum tank pressure of 80 psi. The safety relief valve is designed to protect the tank against excessive pressures. **DO NOT** attempt to make adjustments to this valve. If this valve begins to vent air, reduce the setting on the air inlet regulator.
2. **DO NOT** alter the tank in any way by welding, drilling or machining as this may weaken the structure of the tank.
3. To prevent hazardous static sparks from occurring, always ground the tank by connecting a 12 ga. wire to the tank and to a known earth ground.
4. Halogenated solvents will react chemically with aluminum and may cause an explosion. Examples of halogenated solvents are 111 trichlorethane and methylene chloride. **DO NOT use the removable aluminum tank liner with any halogenated solvents.**
5. Be sure tank pressure is completely relieved before attempting to remove tank cover or material fill cap. Shut off the main air supply to the tank and vent pressure using the vent valve located on the tank lid.





ITEM NO.	PART NO.	DESCRIPTION	ITEM NO.	PART NO.	DESCRIPTION
1	51-896	Tank Shell	17	51-272	3-Way Union
2	51-897	Optional SS Tank Liner	18	51-239	Double Male Nipple
3	51-890	Gasket	19	52-6	Air Regulator (51-222 Opt. 2nd Reg)
4	52-58	Pressure Gauge	20	51-237	Air Flow Diffuser
5	51-895	Tank Lid Assembly	21	51-233	Pin Assembly
6	51-530SS	Material Outlet Manifold	22	51-236	Eye Bolt Assembly
7	52-151SS	Material Outlet Ball Valve	23	51-224	Caster (4 Req'd)
8	51-229	Safety Relief Valve Assembly	23	51-252	Optional Stationary Feet (4 Req'd)
9	51-715SS	Guard	24	51-891	Fluid Pickup Tube
10	98-0115	Nut 3/8-16	25	51-532	Inlet Strainer Assembly
11	51-245	Seal Ring	26	51-548	Inlet Strainer Body
12	51-533	Plug	27	51-549	Inlet Screen Backup Plate
13	51-524	Material Fill Cap	28	51-542	Inlet Screen
14	51-522	Seal Ring - Filler Cap	29	51-519	Inlet Screen Retaining Clip
15	51-234	Tank Vent Valve	30	51-225	Wrench
16	52-150	Air Shut Off Valves			

**Pressure Tanks Available From C.A. Technologies**



2.5 Gallon Pressure Tank  
51-201 Single Regulated  
51-202 Double Regulated



2.5 Gallon Pressure Tank  
With Air Powered Agitation  
51-203 Single Regulated  
51-204 Double Regulated



5 Gallon Pressure Tank  
With No Agitation  
51-507 Single Regulated  
51-508 Double Regulated



5 Gallon Pressure Tank  
With Manual Agitation  
51-501 Single Regulated  
51-502 Double Regulated



5 Gallon Pressure Tank  
With Air Powered Agitation  
51-503 Single Regulated  
51-504 Double Regulated



10 Gallon Pressure Tank  
With No Agitation  
51-551 Single Regulated  
51-552 Double Regulated



10 Gallon Pressure Tank  
With Manual Agitation  
51-557 Single Regulated  
51-558 Double Regulated



10 Gallon Pressure Tank  
With Air Powered Agitation  
51-553 Single Regulated  
51-554 Double Regulated