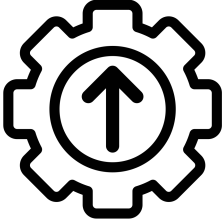


ENHANCED **\*INTERACTIVE\*** MANUAL



BLUE TEXT = CLICK TO ORDER 



- [51-201 SINGLE REGULATED](#)
- [51-202 DOUBLE REGULATED](#)
- [51-202-SS DOUBLE REGULATED, STAINLESS STEEL FITTED\\*](#)
- [51-207 DOUBLE REGULATED \(INLINE REGULATORS\)](#)

\*STAINLESS STEEL FITTED TANKS HAVE STAINLESS STEEL OUTLET FITTINGS AND PICK-UP TUBE

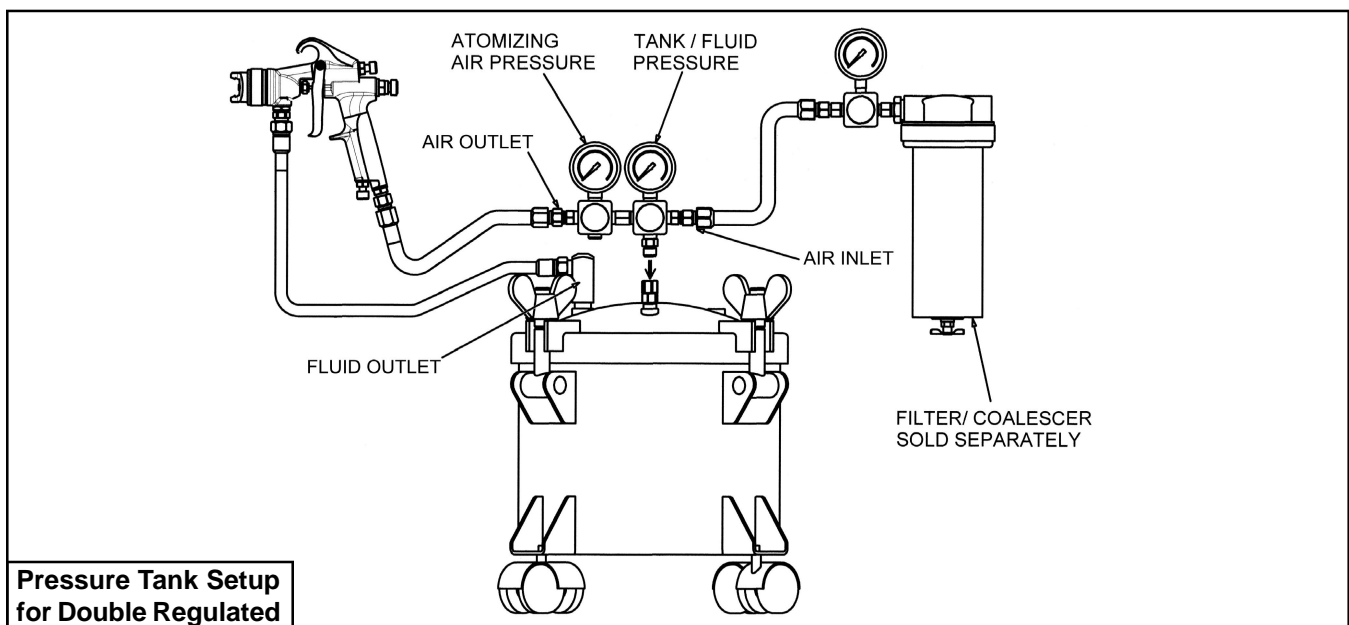
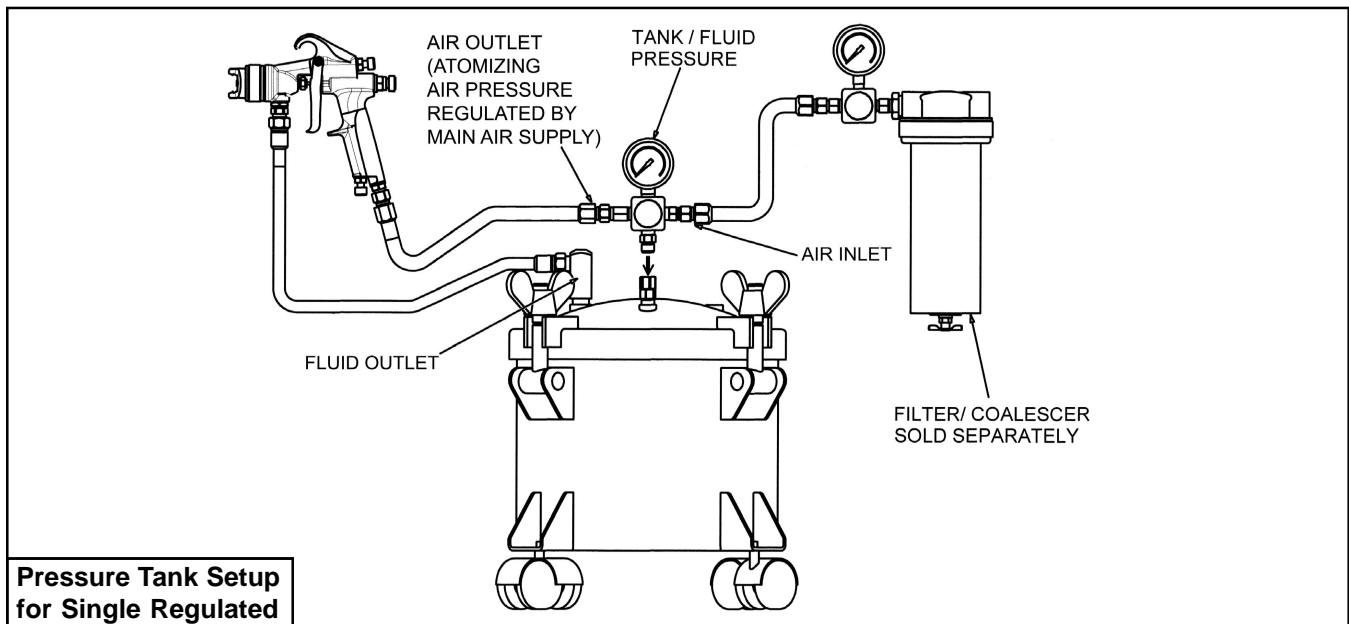
**IMPORTANT NOTE:** IF THIS PRESSURE TANK IS TO BE USED FOR SPRAYING FLAMMABLE MATERIALS, OPERATOR MUST NOT PRESSURIZE THIS TANK MORE THAN 15 PSI TO MEET OSHA REQUIREMENTS. FOR NON-ASME PRESSURE VESSELS. IT IS THE RESPONSIBILITY OF THE OPERATOR TO FOLLOW THIS MANDATORY PROCEDURE.

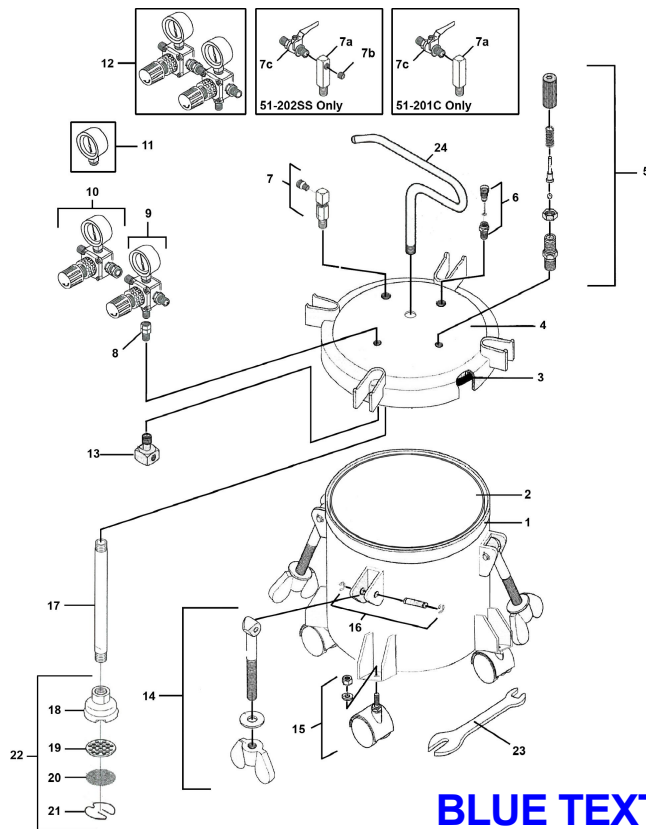
## GENERAL INFORMATION

This pressure tank is equipped with either single or double air pressure regulation, pressure safety relief valve, a disposable plastic liner, and four caster wheels.

## CAUTION!

1. Maximum tank pressure of 80 psi. The safety relief valve is designed to protect the tank against excessive pressures. DO NOT attempt to make adjustments to this valve. If this valve begins to vent air, reduce the setting on the air inlet regulator.
2. DO NOT alter the tank in any way by welding, drilling or machining as this may weaken the structure of the tank.
3. To prevent hazardous static sparks from occurring, always ground the tank by connecting a 12 ga. wire to the tank and to a known earth ground.
4. Be sure tank pressure is completely relieved before attempting to remove tank cover or material fill cap. Shut off the main air supply to the tank and vent pressure using the vent valve located on the tank lid.





**BLUE TEXT = CLICK TO ORDER**

ITEM NO.	PART NO.	DESCRIPTION	ITEM NO.	PART NO.	DESCRIPTION
1	<a href="#">51-226</a>	Tank Shell	13	<a href="#">51-237</a>	Air Flow Diffuser
2	<a href="#">51-261</a>	Disposable Rigid Liners (12 or 60 pk)	14	<a href="#">51-236</a>	Eye Bolt Assembly
	<a href="#">51-231</a>	Disposable Bag Liners (10 pk)	15	<a href="#">51-224</a>	Caster (4 Req'd)
	<a href="#">51-227</a>	Stainless Steel Tank Liner		<a href="#">51-252</a>	Optional Stationary Feet (4 Req'd)
3	<a href="#">51-220</a>	Gasket	16	<a href="#">51-233</a>	Pin Assembly
4	<a href="#">51-228</a>	Tank Lid Assembly	17	<a href="#">51-223</a>	Fluid Pickup Tube
5	<a href="#">51-229</a>	Safety Relief Valve Assembly	18	<a href="#">51-256</a>	Inlet Strainer Body
6	<a href="#">51-234</a>	Tank Vent Valve	19	<a href="#">51-254</a>	Inlet Screen Backup Plate
7	<a href="#">51-230</a>	Material Outlet Valve	20	<a href="#">51-248</a>	Inlet Screen
8	<a href="#">51-280</a>	Swivel Connection	21	<a href="#">51-255</a>	Inlet Retainer Clip
9	<a href="#">52-10A</a>	Fluid Regulator Assembly	22	<a href="#">51-232</a>	Inlet Strainer Assembly
10	<a href="#">52-11A</a>	Atomizing Air Regulator Assembly	23	<a href="#">51-225</a>	Wrench
11	<a href="#">52-58</a>	Pressure Gauge	24	<a href="#">51-235</a>	Handle
12	<a href="#">52-303</a>	Dual Regulator Assembly			

Single regulated supplied with item 9, double regulated supplied with items 9 & 10

**51-207 Specific Items**

ITEM NO.	PART NO.	DESCRIPTION	ITEM NO.	PART NO.	DESCRIPTION
9	<a href="#">52-7</a>	Inline Fluid Regulator Assembly	12	<a href="#">52-302</a>	Inline Dual Regulator Assembly
10	<a href="#">52-8</a>	Inline Air Regulator Assembly			

**51-202SS Specific Items**

ITEM NO.	PART NO.	DESCRIPTION	ITEM NO.	PART NO.	DESCRIPTION
7a	<a href="#">51-230SS</a>	Material Outlet Valve	7c	<a href="#">52-151SS</a>	SS Ball Valve
7b	<a href="#">98-0261</a>	Plug	17	<a href="#">51-223SS</a>	Fluid Pickup Tube

**51-201C**

ITEM NO.	PART NO.	DESCRIPTION	ITEM NO.	PART NO.	DESCRIPTION
7a	<a href="#">51-230</a>	Material Outlet Valve	7c	<a href="#">52-151</a>	Ball Valve

**Pressure Tanks Available From C.A. Technologies**



2.5 Gallon Pressure Tank  
51-201 Single Regulated  
51-202 Double Regulated



2.5 Gallon Pressure Tank  
With Air Powered Agitation  
51-203 Single Regulated  
51-204 Double Regulated



5 Gallon Pressure Tank  
With No Agitation  
51-507 Single Regulated  
51-508 Double Regulated



5 Gallon Pressure Tank  
With Manual Agitation  
51-501 Single Regulated  
51-502 Double Regulated



5 Gallon Pressure Tank  
With Air Powered Agitation  
51-503 Single Regulated  
51-504 Double Regulated



10 Gallon Pressure Tank  
With No Agitation  
51-551 Single Regulated  
51-552 Double Regulated



10 Gallon Pressure Tank  
With Manual Agitation  
51-557 Single Regulated  
51-558 Double Regulated



10 Gallon Pressure Tank  
With Air Powered Agitation  
51-553 Single Regulated  
51-554 Double Regulated