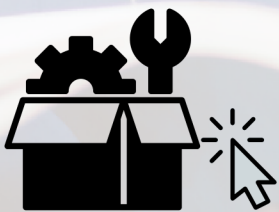


# CET

Coating Equipment Technology, Inc  
Quality Spray Equipment. World Class Service.

## C.A. Technologies

### CA Tech 2.5 Gallon Pressure Tanks Stainless Steel - Bottom Outlet



### CLICK-N-PICK SPARE PARTS CUTSHEET

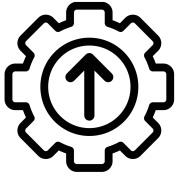
Easily find spare parts without digging through the full manual.

[Click on part numbers to order.](#)



**2.5 GALLON SS (NON-ASME)**  
STAINLESS STEEL NON AGITATED BOTTOM OUTLET  
PRESSURE TANK PRODUCT INFORMATION

ENHANCED \*INTERACTIVE\* MANUAL



BLUE TEXT = CLICK TO ORDER 



- 51-910** NON REGULATED
- 51-911** SINGLE REGULATED
- 51-912** DOUBLE REGULATED

**IMPORTANT NOTE: IF THIS PRESSURE TANK IS TO BE USED FOR SPRAYING FLAMMABLE MATERIALS, OPERATOR MUST NOT PRESSURIZE THIS TANK MORE THAN 15 PSI TO MEET OSHA REQUIREMENTS. FOR NON-ASME PRESSURE VESSELS. IT IS THE RESPONSIBILITY OF THE OPERATOR TO FOLLOW THIS MANDATORY PROCEDURE.**

**GENERAL INFORMATION**

This pressure tank is equipped with either single or double air pressure regulation, pressure safety relief valve, tank vent valve, bottom outlet ball valve and four caster wheels.

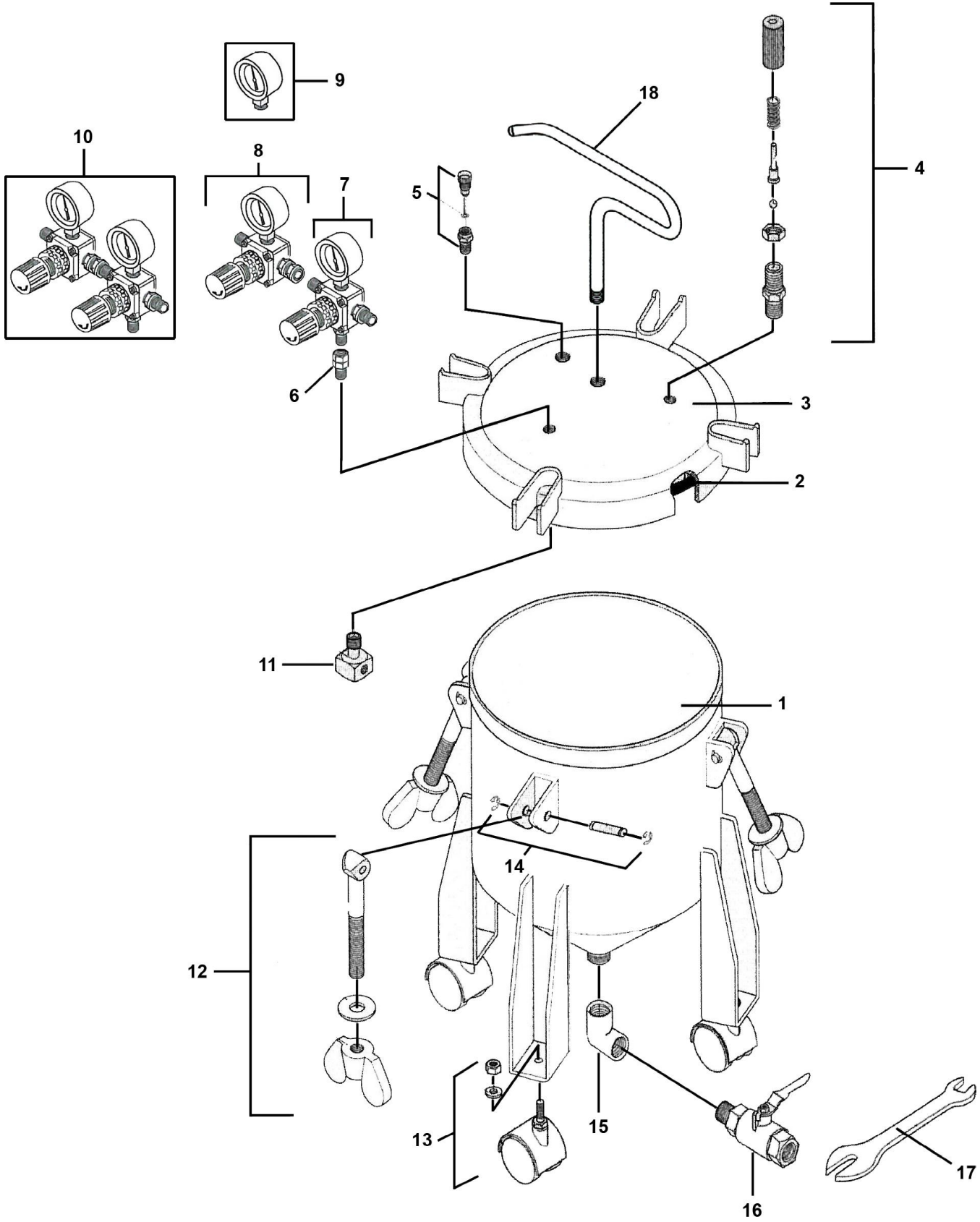
**CAUTION!**

1. Maximum tank pressure of 80 psi. The safety relief valve is designed to protect the tank against excessive pressures. DO NOT attempt to make adjustments to this valve. If this valve begins to vent air, reduce the setting on the air inlet regulator.
2. DO NOT alter the tank in any way by welding, drilling or machining as this may weaken the structure of the tank.
3. To prevent hazardous static sparks from occurring, always ground the tank by connecting a 12 ga. wire to the tank and to a known earth ground.
4. Be sure tank pressure is completely relieved before attempting to remove tank cover or material fill cap. Shut off the main air supply to the tank and vent pressure using the vent valve located on the tank lid.

ITEM NO.	PART NO.	DESCRIPTION
1	51-278SS	Tank Shell
2	51-220	Gasket
3	51-279SS	Tank Lid Assembly
4	51-229	Safety Relief Valve Assembly
5	51-234	Tank Vent Valve
6	51-280	Swivel Connection
7	52-10A	Fluid Regulator Assembly
8	52-11A	Atomizing Air Regulator Assembly
9	52-58	Pressure Gauge
10	52-303	Dual Regulator Assembly
11	51-237	Air Flow Diffuser
12	51-236	Eye Bolt Assembly
13	51-224	Caster (4 Req'd)
	51-252	Optional Stationary Feet (4 Req'd)
14	51-233	Pin Assembly
15	51-275SS	Fluid Outlet Elbow
16	51-274SS	Fluid Outlet Ball Valve
17	51-225	Wrench
18	51-235SS	Handle
	51-222K	Repair Kit for Regulators

Note: (1) 98-0383 & (1) 53-555 are needed to adapt a standard 3/8" fluid hose fitting to the bottom outlet ball valve.

Single regulated supplied with item 7, double regulated supplied with items 7 & 8

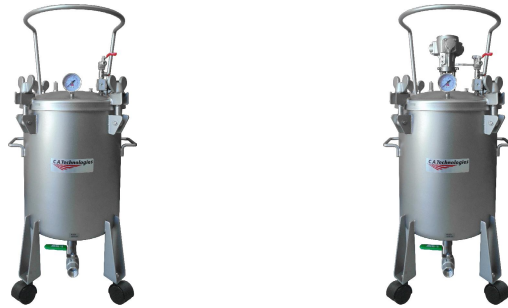


# BOTTOM OUTLET SS PRESSURE TANKS

## Bottom Outlet Pressure Tanks Available From C.A. Technologies



2.5 Gallon	PART NO.	REGULATORS	AGITATOR
	<a href="#">51-910</a>	0	None
	51-911	1	None
	51-912	2	None
	51-913	1	Air
	51-914	2	Air
	51-915	0	Air



5 Gallon	PART NO.	REGULATORS	AGITATOR
	51-920	0	None
	<a href="#">51-921</a>	1	None
	51-922	2	None
	51-923	1	Air
	51-924	2	Air
	51-925	0	Air



12.5 Gallon	PART NO.	REGULATORS	AGITATOR
	51-940	0	None
	<a href="#">51-941</a>	1	None
	51-942	2	None
	51-943	1	Air
	<a href="#">51-944</a>	2	Air
	<a href="#">51-945</a>	0	Air